

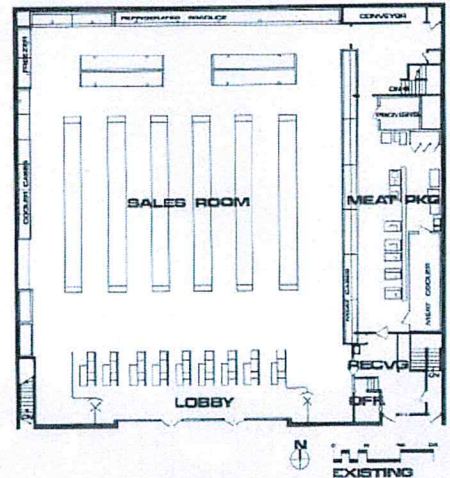
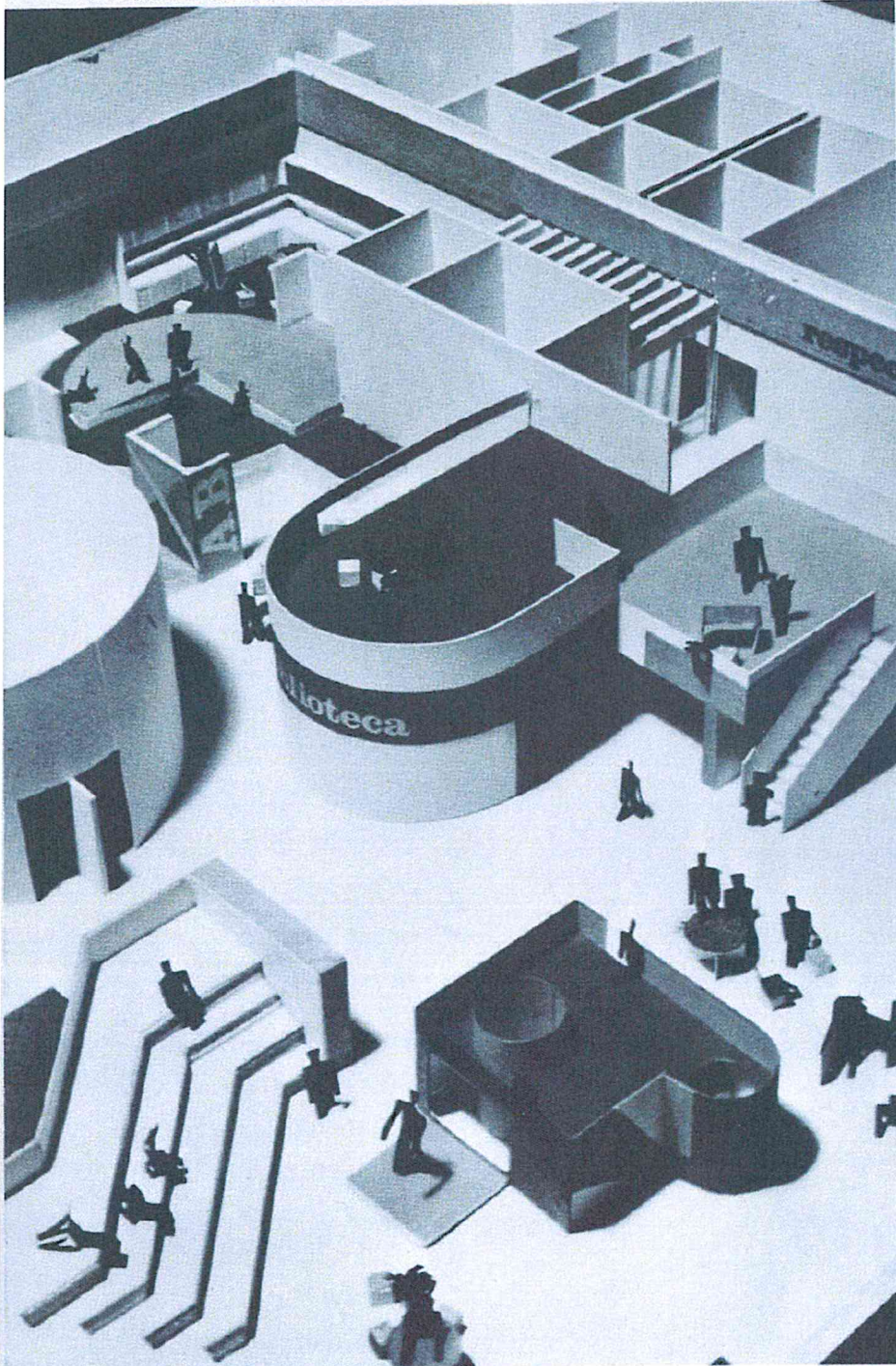
# I.types of places

from: Found Spaces and Equipment  
for Children's Centers  
Education Facilities Laboratories, Inc  
NY, NY  
1972

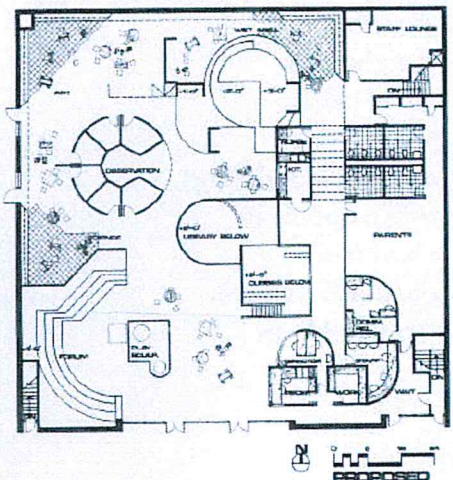
(on [www.edfacilities.org](http://www.edfacilities.org)  
NCEC resource list)

supermarkets

EAST HARLEM PRESCHOOL, NEW YORK CITY



EAST 103RD STREET



EAST 103RD STREET

Former supermarket will be converted into a day care center for 90 children and a neighborhood center. The raised sections make interesting learning places for the children in an otherwise large flat area, and increase the usable floor space.



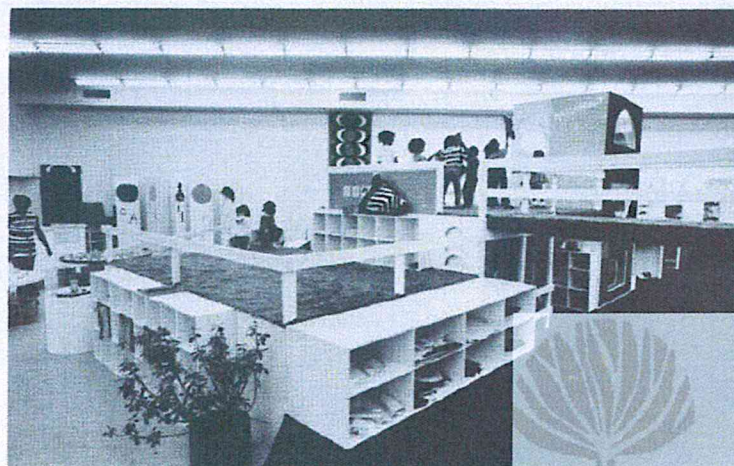
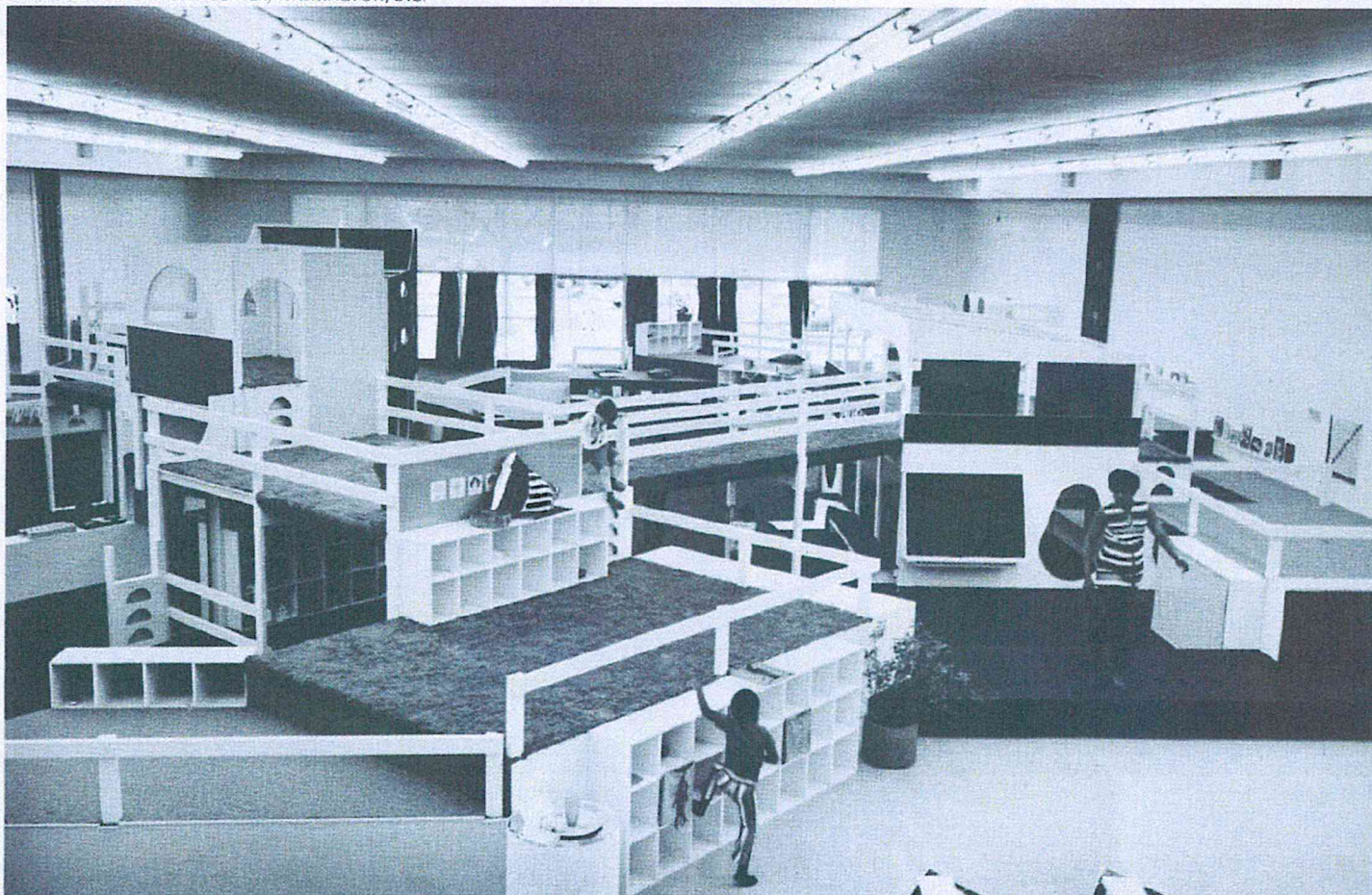
CRS Archives Document  
CRS Center, College Station, TX  
<http://crscenter.tamu.edu>



A landscape of platforms, bridges,  
storage, and nooks and crannies  
was built in an old store  
by amateur carpenters. The all-day  
center accommodates 100 children of  
employees at a telephone company.

**supermarkets**

C.L.C. GOOD HOPE ROAD CENTER, WASHINGTON, D.C.





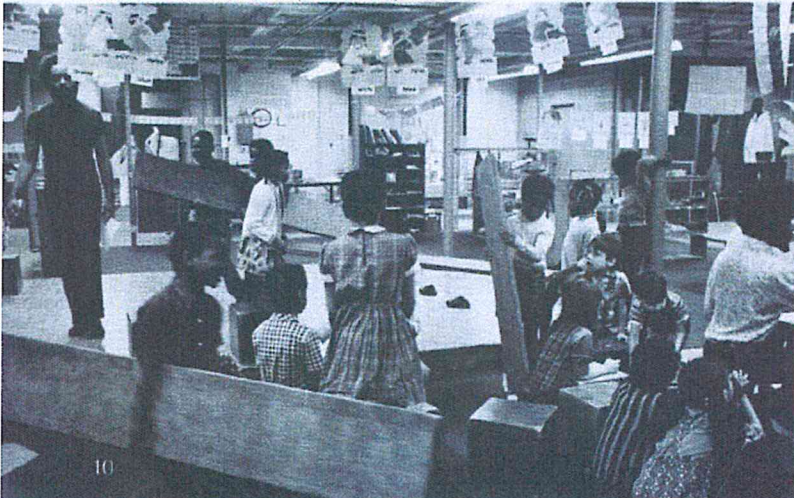
# I.types of places



warehouses



THE EVERYWHERE SCHOOL, HARTFORD, CONN.



Carpets and paint helped transform a shabby warehouse into a lively small K-3 school. Children move planks and boxes around to make seats, benches, desks or tables.



CRS Archives Document  
CRS Center, College Station, TX  
<http://crscenter.tamu.edu>



Large windows in former store display children's activities to the community and help raise public interest in the project. About 90 children between 3 and 5 years old attend.

**small stores**



HILLTOP CENTER, DORCHESTER, MASS.





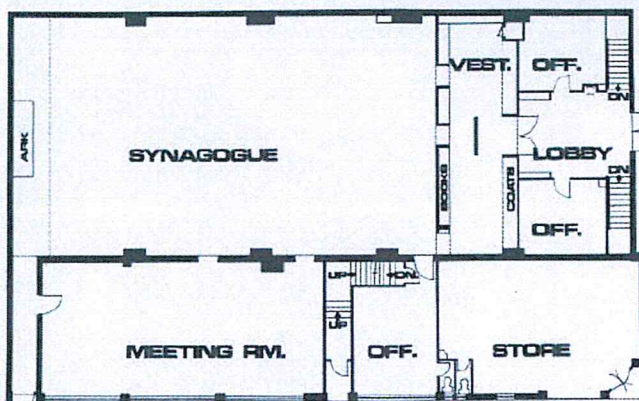
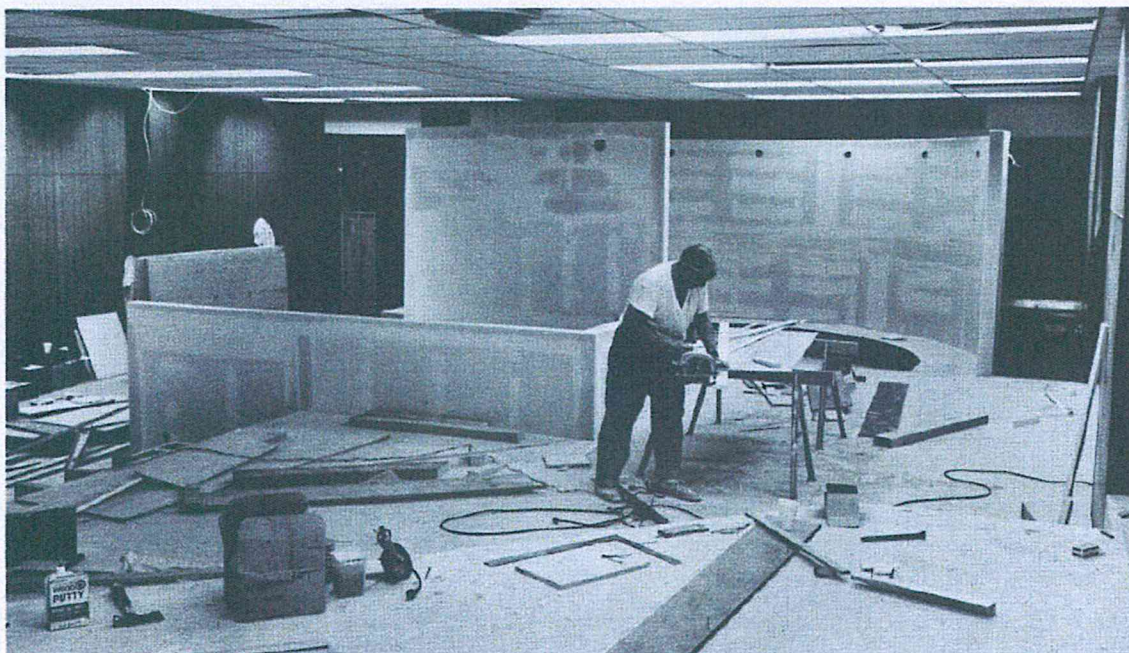
# I. types of places

small stores

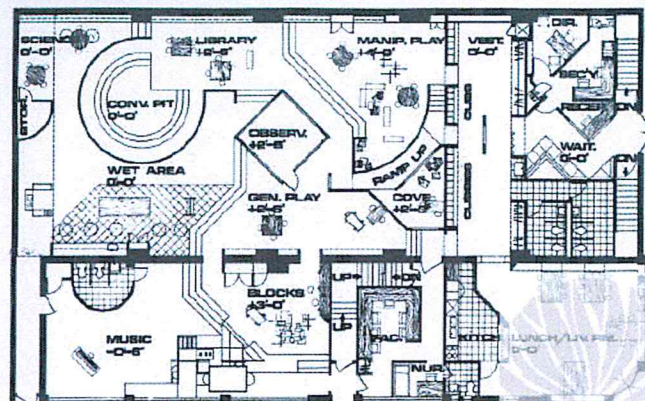
THE BLOCK SCHOOL, NEW YORK CITY



Variations in levels break up the spaces once occupied by a synagogue and a store. Parents of 80 preschoolers did a lot of the alteration work.



Before



After



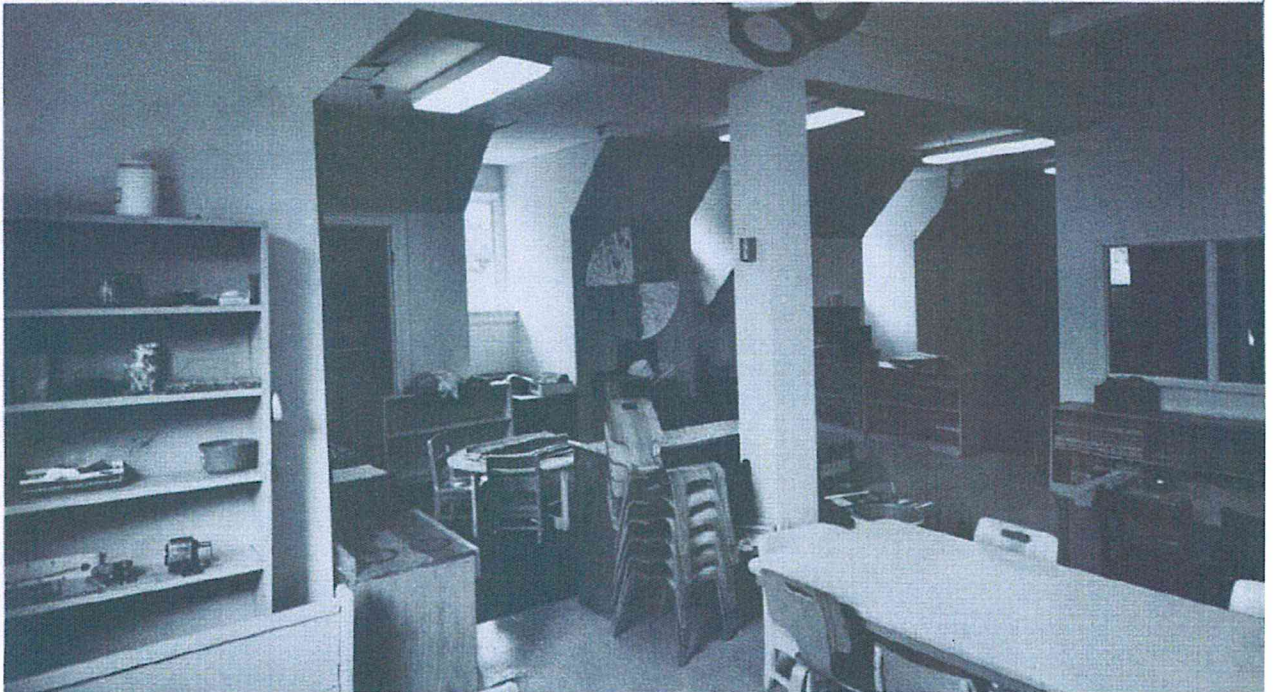


THE NEW NURSERY SCHOOL, GREELEY, COLO.

A small suburban house serves as a preschool for 30 children on split sessions. The school is financed by the U.S. Office of Economic Opportunity and a state college that uses it as an early education laboratory.

*residences*

NATIONAL CHILD RESEARCH CENTER, WASHINGTON, D.C.



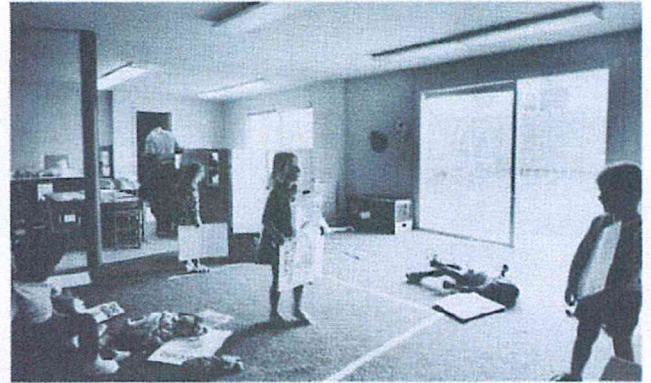
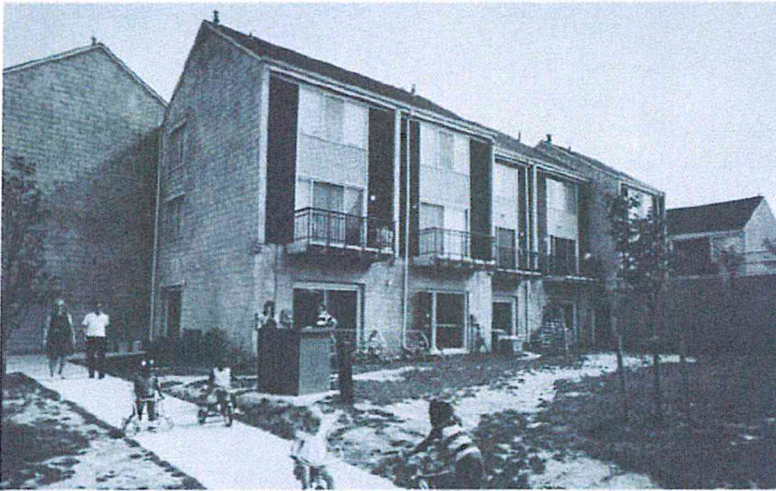
A Victorian mansion remodeled for 140 preschool children provides gracious spaces not often found in children's centers. It also serves as a research center for early education.





# I. types of places

THE ROSLYN RISE DAY CARE CENTER, COLUMBIA, MD.



The ground floor wall between two new townhouses was removed to provide space for an all-day center for 3- to 5-year-olds. The upper levels are private residences.



CORLEARS SCHOOL, NEW YORK CITY

## residences

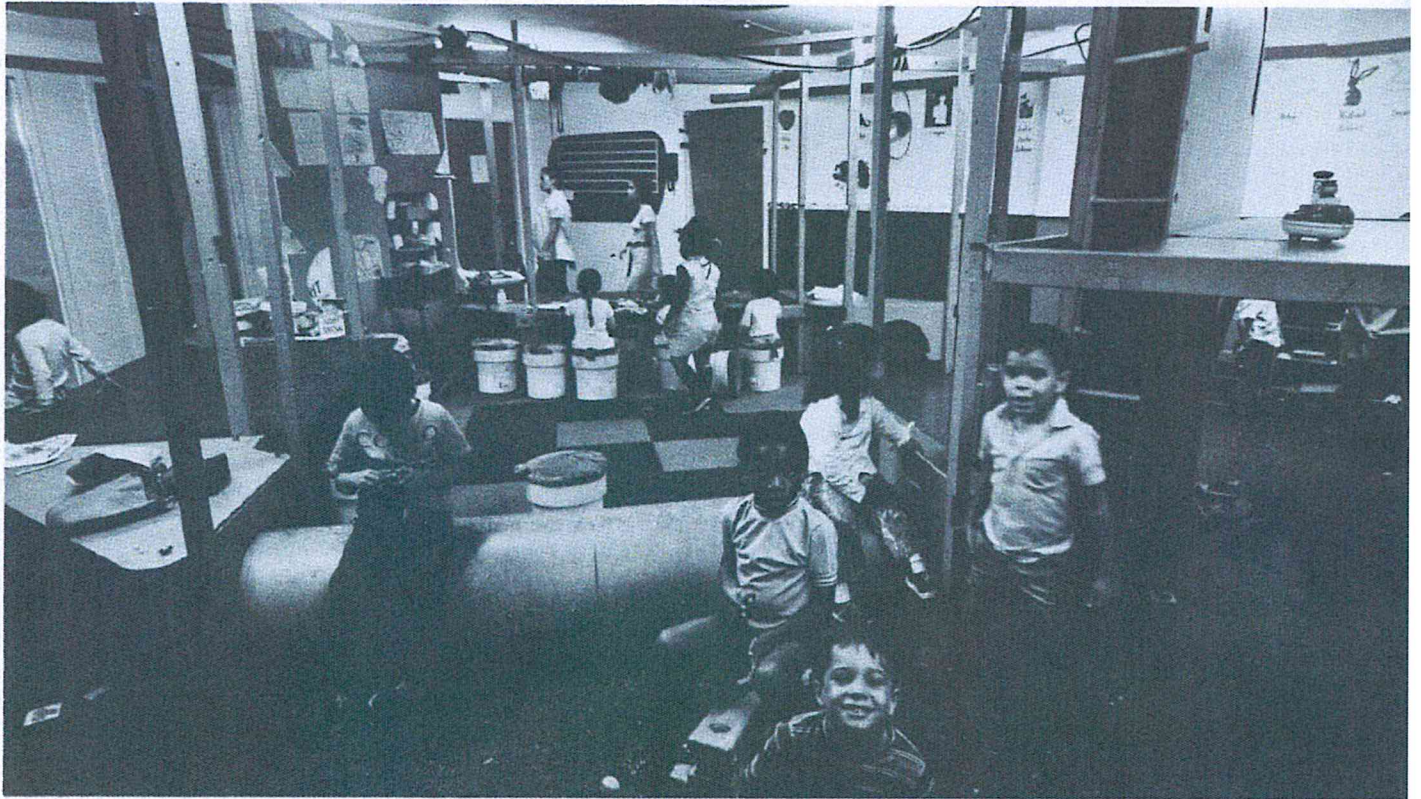
Adjoining houses on a city street were remodeled into a school for 115 children aged 3 to 8. Capacity will be enlarged for another 100 pupils through 8th grade.



CRS Archives Document  
CRS Center, College Station, TX  
<http://crscenter.tamu.edu>



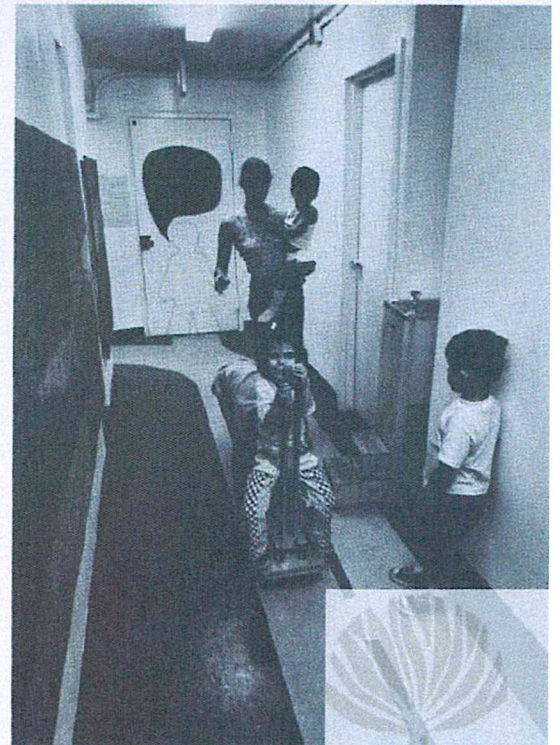
# apartment buildings



MANHATTAN VALLEY DAY CARE CENTER, NEW YORK CITY



Basement storage rooms  
of a city apartment  
building were converted  
into a day care center  
for tenants' children.  
Floor tiles in corridor  
mark traffic lanes  
for wheeled toys.



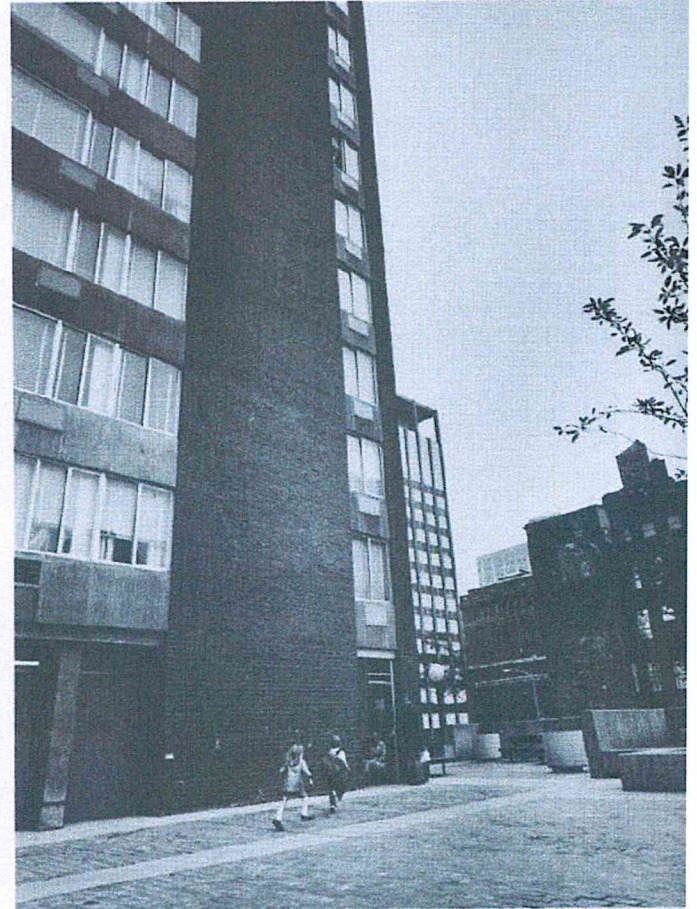


# I.types of places

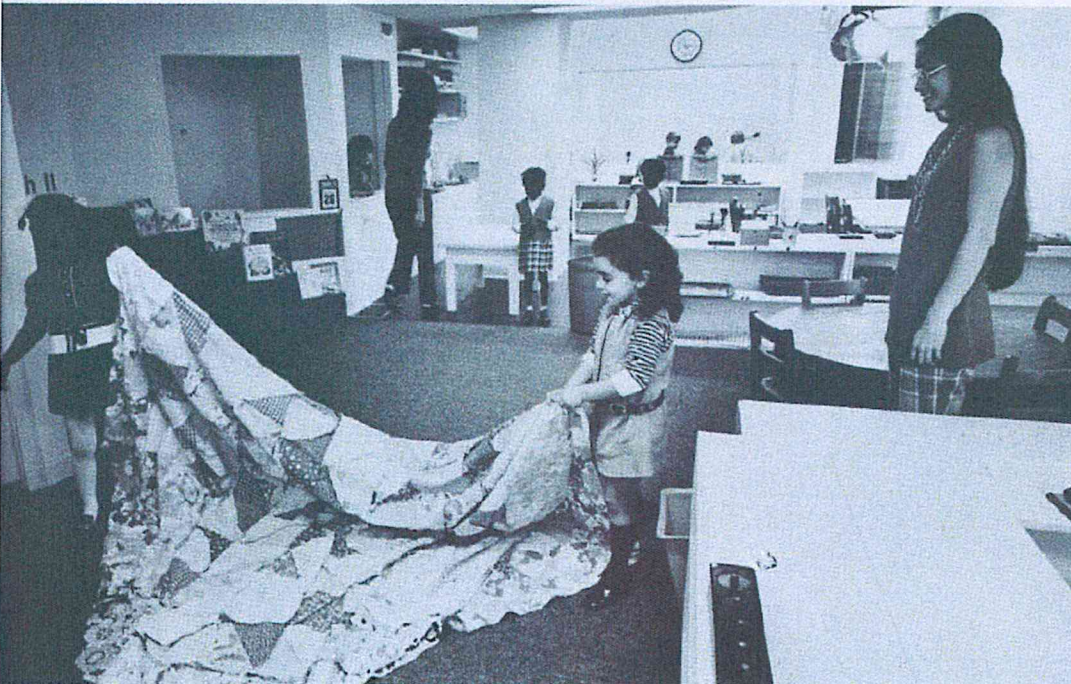
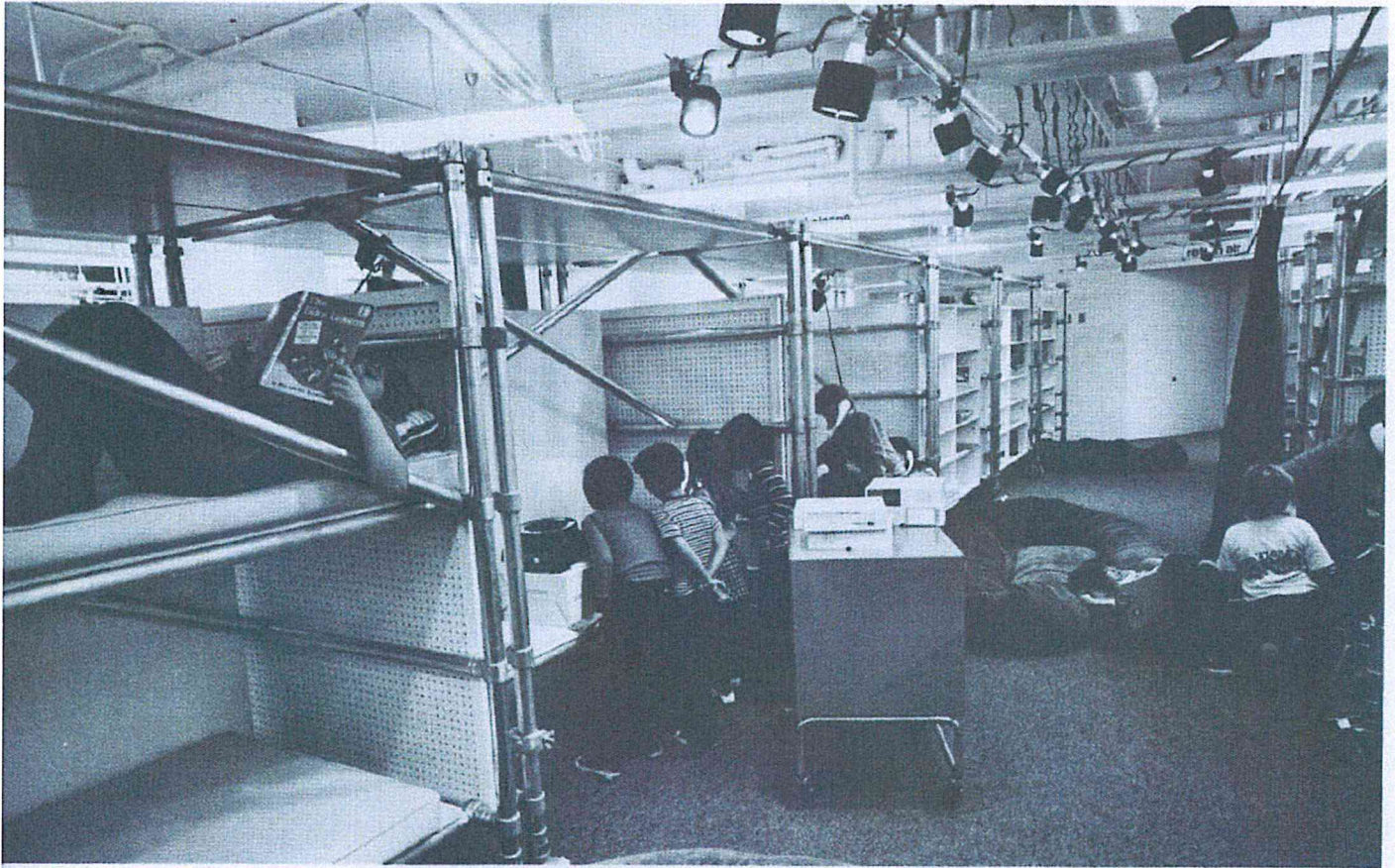
## office buildings

THE ACORN SCHOOL, NEW YORK CITY

Space zoned for professional offices on the ground floor of a new high-rise apartment building was reallocated for a children's center and school. Some areas have acoustic ceilings, but where ducts or pipes were exposed, the designers labeled them so children would learn about building services. Plaza will be equipped for play.

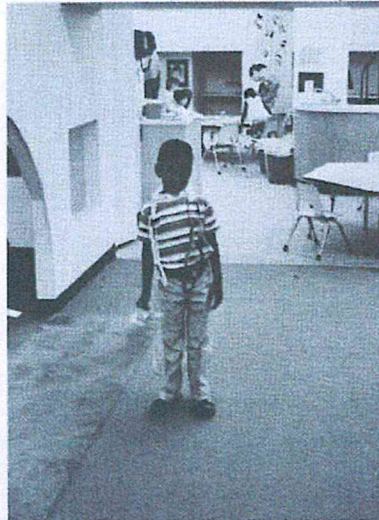






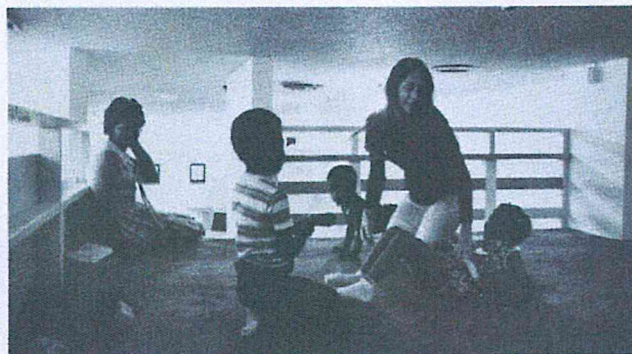


# I. types of places

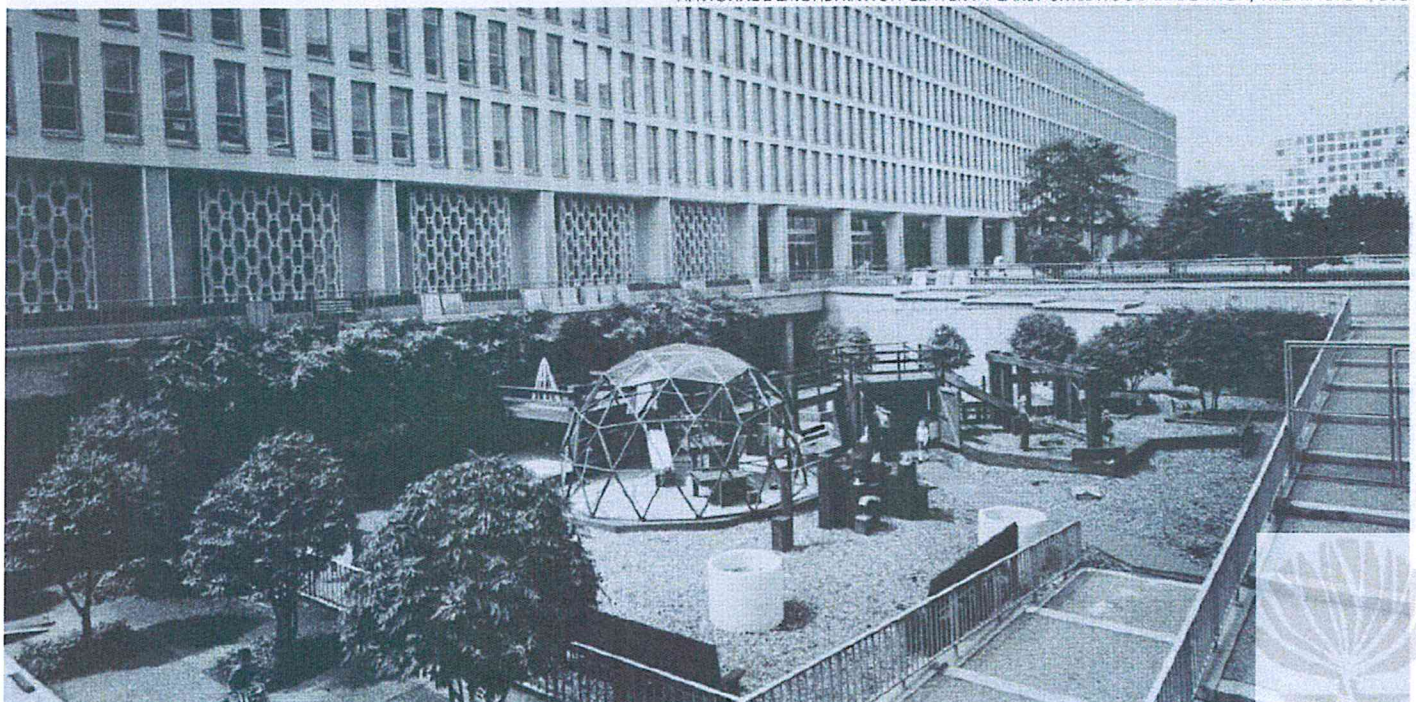


## office buildings

Multilevel platforms and carpeting in an employees' day care center dispel the institutional atmosphere of a federal government building. This center also enjoys a large outdoor area with play equipment. (See Outdoor Spaces.)



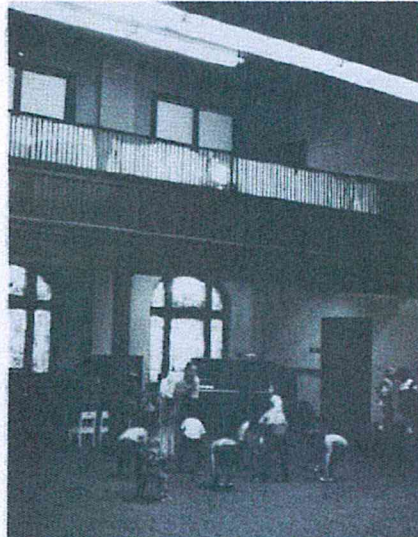
NATIONAL DEMONSTRATION CENTER IN EARLY CHILDHOOD EDUCATION, WASHINGTON, D.C.



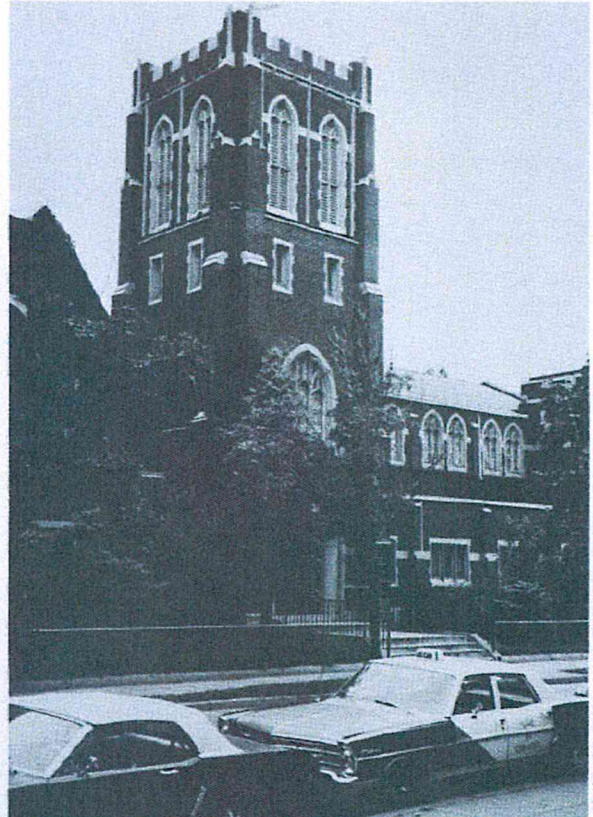


## churches

A carpeted church with high ceilings and stained glass windows provides a simple but effective center for a Head Start program. Inner city churches left empty when parishioners migrate to the suburbs often can be rented by nonprofit groups such as day care centers.



COLUMBIA ROAD PRESCHOOL, WASHINGTON, D.C.

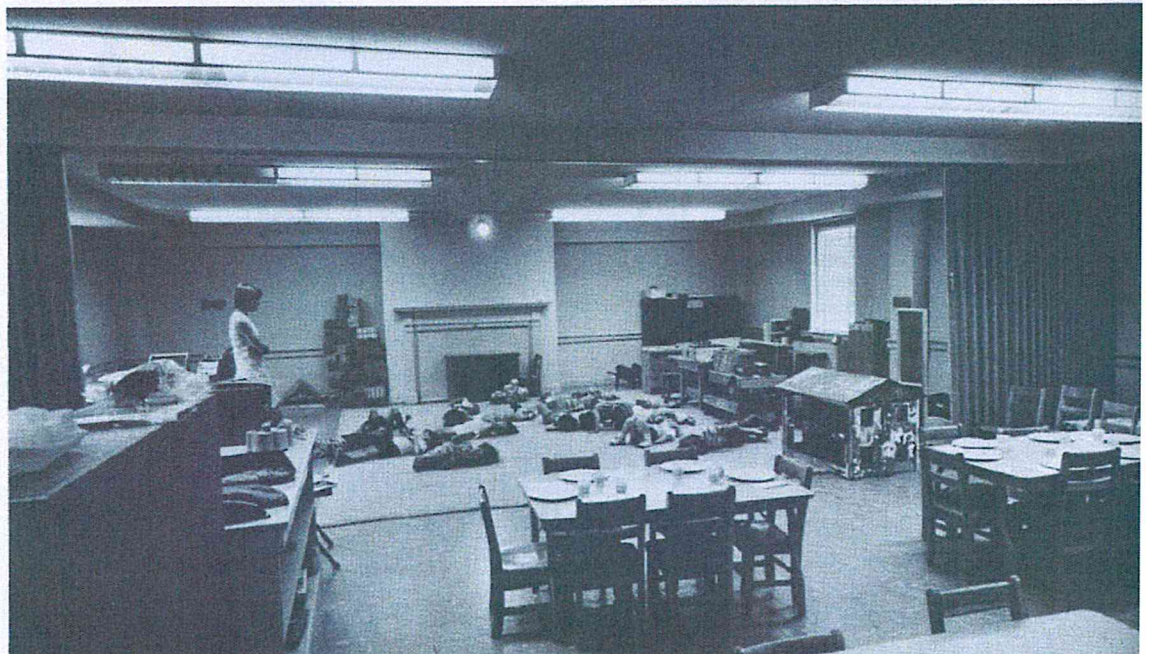
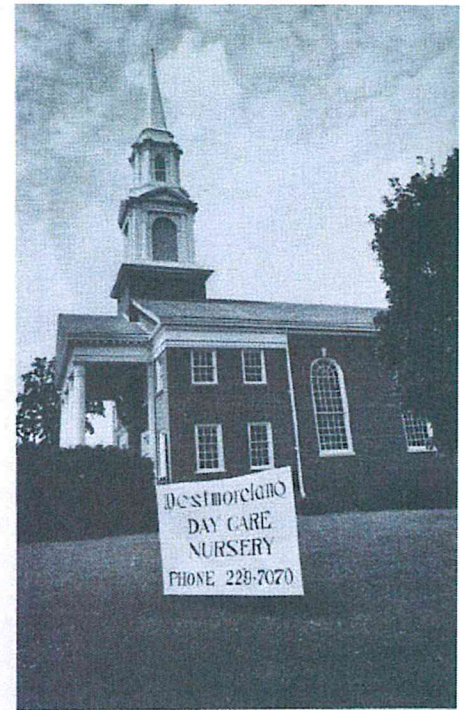




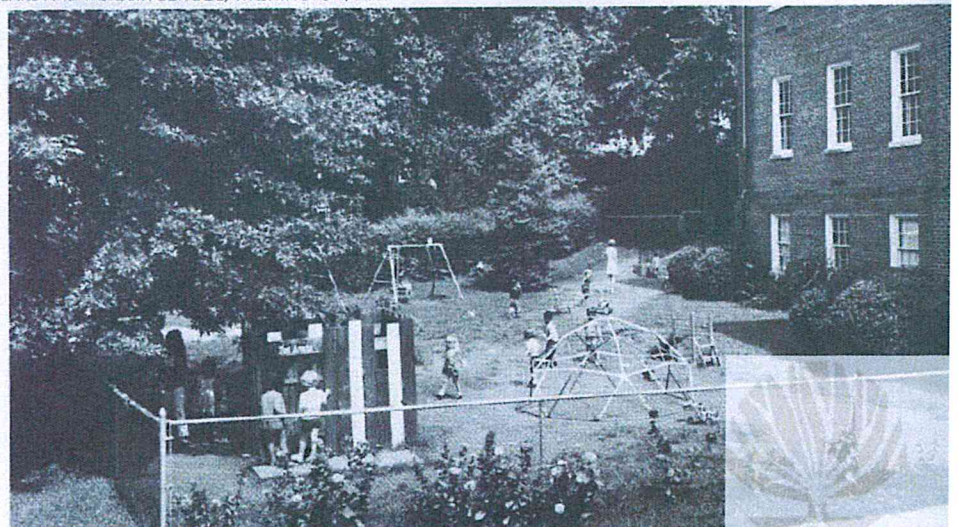
# I. types of places

## churches

Meeting rooms in a suburban church house 30 children in a non-sectarian nursery school and day care center. A drawback to this type of accommodation is that the rooms are shared with the Sunday school. Therefore, most equipment and materials must be put away for weekends. Also, the day care program has to use the existing heavy furniture that is not really functional for a preschool.



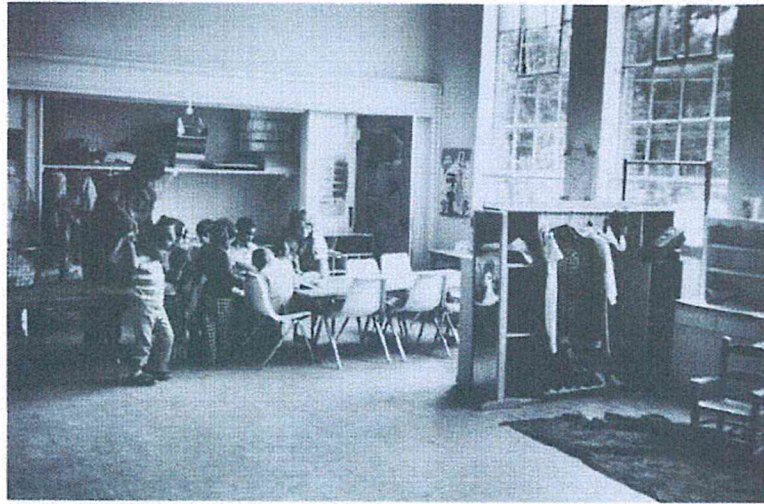
WESTMORELAND DAY CARE AND NURSERY SCHOOL, WASHINGTON, D.C.



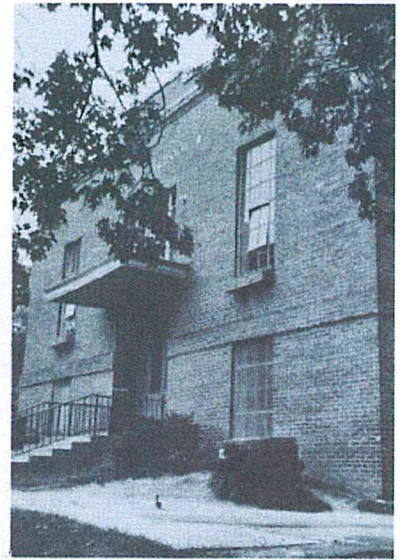


## old public schools

An empty public school is rented for \$1.00 per year by a Head Start program. Parents' volunteer labor helped shape up the building for 135 children.

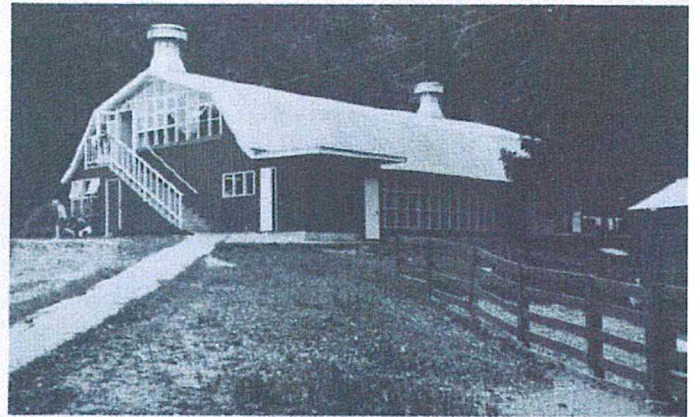


ARLINGTON CHILD DEVELOPMENT CENTER, ARLINGTON, VA.



## farm buildings

Barns and farm buildings abound in country districts, but they usually require major alterations, such as additional exits, windows, heating, lighting, insulation, and interior finishes. Nevertheless, the benefits of a rural atmosphere and the presence of farmyard animals make these worthwhile investments.



BURGUNDY FARM COUNTRY DAY SCHOOL, ALEXANDRIA, VA.

